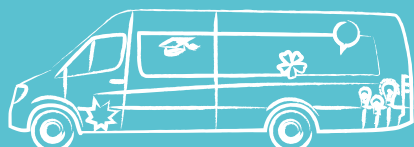


# PBIS Transportation System Manual



SMS the driver if your child is absent ASAP (Home-School-Home Service only)

Be ready 5 min prior to arrival



School Bus



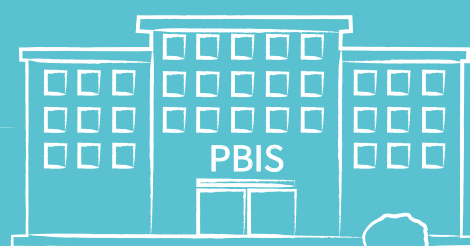
Shuttle Bus



School Bus



Shuttle Bus



Children get off at school premises at all campuses. Libuš Shuttle Bus arrives at Sídliště Libuš bus stop next to Libuš campus.

## Arrival times

8.05–20 AM Kamýk & Vlastina,  
8.05–17 AM Libuš

Parents to view their child's diary in **SchoolsBuddy** for daily transport and club arrangements. Parents to make daily changes/exceptions to the permanent bus order via change request in their child's diary in **SchoolsBuddy** at least 12 hours in advance. Parents guide: **Transport change request**

## Afternoon Bus Cancellation Nursery - Year 6

### Contacts for afternoon cancellation and absence:

#### Kamýk

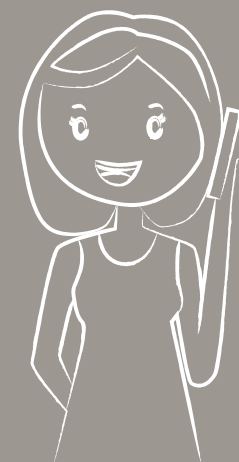
Early Years – Year 3: Ms Petra Benlalam, e-mail: [petra.benlalam@pbis.cz](mailto:petra.benlalam@pbis.cz), tel. +420 226 096 225  
Year 4–6: Ms Veronika Sedláková, e-mail: [veronika.sedlakova@pbis.cz](mailto:veronika.sedlakova@pbis.cz), tel. +420 226 096 220  
Year 7–9: Ms Diana Murray Tomsová, e-mail: [diana.tomsova@pbis.cz](mailto:diana.tomsova@pbis.cz), tel. +420 226 096 230  
Kamýk Reception: [info@pbis.cz](mailto:info@pbis.cz), tel: +420 226 096 200

#### Vlastina

Mr Tadeáš Adamec, e-mail: [tadeas.adamec@pbis.cz](mailto:tadeas.adamec@pbis.cz), tel. +420 226 096 180  
Ms Klára Krejčíková, e-mail: [klara.krejcikova@pbis.cz](mailto:klara.krejcikova@pbis.cz), tel. +420 226 096 170

#### Libuš

Ms Jana Veselá, e-mail: [jana.vesela@pbis.cz](mailto:jana.vesela@pbis.cz), tel. +420 226 096 100 (for long-term absence)  
Ms Pavlína Kratochvílová, e-mail: [p.kratochvilova@pbis.cz](mailto:p.kratochvilova@pbis.cz), tel. +420 226 096 100



No cancellation required for senior students (Y7–Y13) – students make their own way home

## After School Clubs

If your child attends an After School Club, transport with a departure at 3.35 PM is cancelled automatically.

### After Club Transport at Kamýk and Libuš

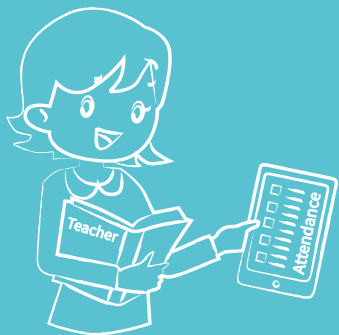
Kamýk and Libuš parents can sign in their children for the After Club Bus to Kačerov, Smíchovské nádraží, Průhonice and Vinohrady.

Parents to choose after club transport (or parents collection) for each day. The bus order can be updated when registering for the after school clubs via SchoolsBuddy each term. If your child attends an after school club, your child will be automatically added to the relevant after club bus register.

For daily changes in club arrangements parents to contact school administrator.



*Afternoon Departure* 3.35 PM Kamýk and Vlastina, 3.41 PM Libuš  
*After Club Bus Departure* 4.35 PM Kamýk, 4.41 PM Libuš



Teacher on bus duty or school driver takes bus attendance for Nursery – Year 6 children



School Bus



Shuttle Bus



After Club Bus



Parents need to collect Primary School children at the bus stop/drop off point. Year 7–13 students can walk home alone. Please make sure you are on time to collect your child.

### PERMISSION TO GO HOME FROM THE BUS STOP FOR PRIMARY SCHOOL CHILDREN

Parents of Primary school children (Y1-6) can set up permission to walk home alone from the bus stop for their children. The walking permission can be found in the parents profile in **SchoolsBuddy**.

Parents' guide: **Permission to walk from the bus**

Please set this permission for Y1-6 children, Y7-13 can go home independently therefore no permission is needed.



### For emergencies please contact:

Mr. Jan Veselý, tel. +420 731 238 067, e-mail: jan.vesely@pbis.cz

### For enquiries please contact:

Ms Soňa Nováková, tel. +420 604 473 862, e-mail: sona.novakova@pbis.cz

Visits for Individual transport arrangements possible at Kamýk office E211 (1<sup>st</sup> floor next to administrative section)